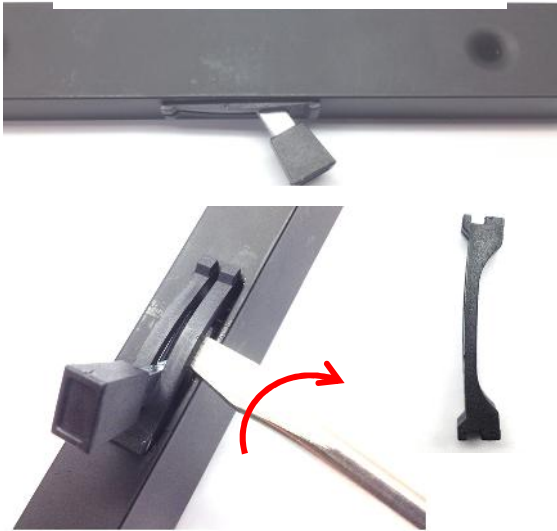


E 2077 Removal & Replacement

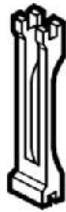
C 1007 with Handle removed for demonstration



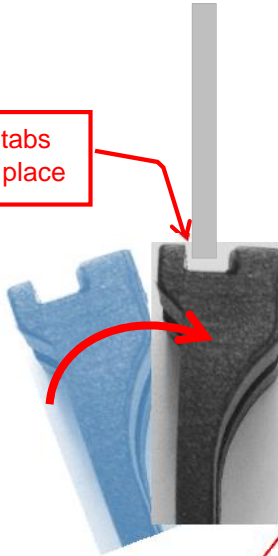
1. Insert flat screwdriver under the retainer clip & rotate to draw the top tabs of the clip out of position.



2. After removing the clip rotate the old latch out of the handle. Reverse the procedure to insert the new latch.



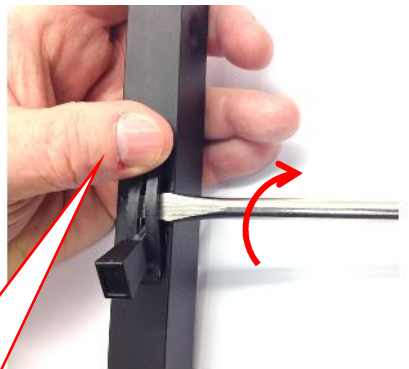
Locking tabs snap into place



3. Reset the latch faceplate into position



4. Set the bottom of the retainer clip first.



5. Hold the top locking tabs of the retainer clip as you rotate the flat screwdriver until the top locking tabs drop into place.

